

Reuse of building parts

**Habitare - exhibition building for Avotakka magazine
made with reused Spolia® products**

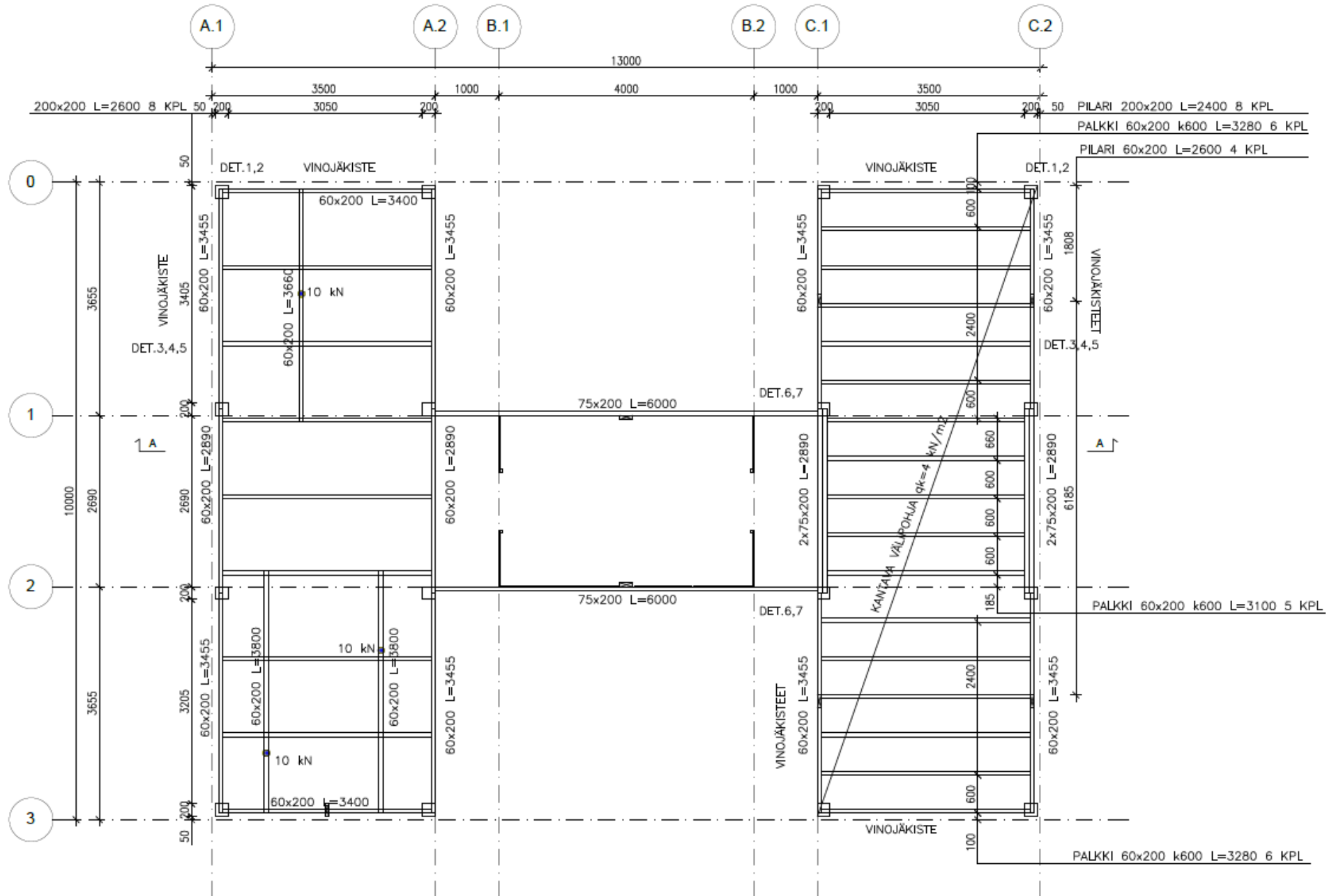
In this presentation we are revealing stories behind a building made with reused materials. We present the process of collecting and refining the reused building parts for Habitare exhibition building for Avotakka magazine.



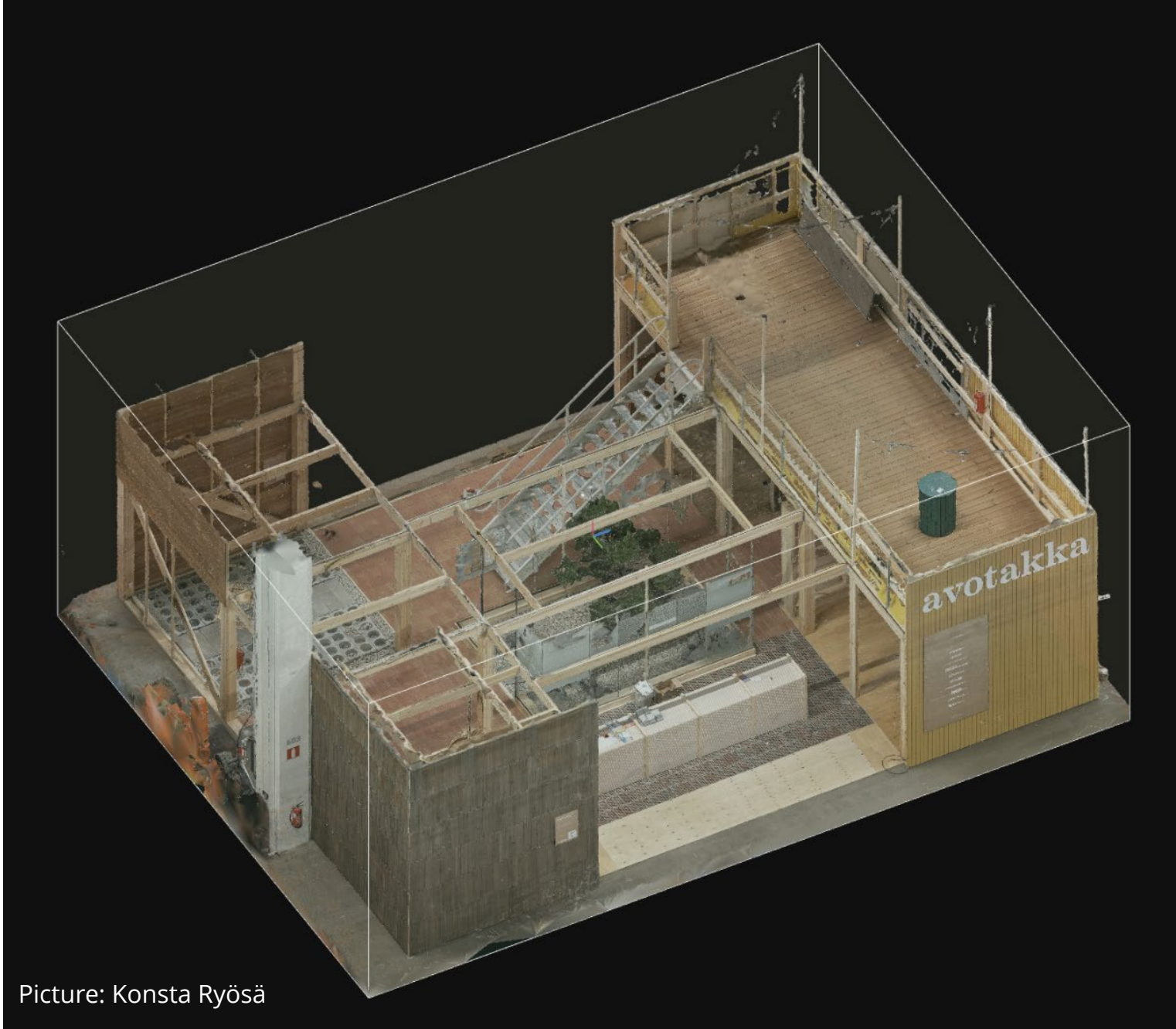
Exhibition building for Avotakka: First model by Nemo architects

Finding, collecting and fitting the building parts for a plan

The process started from first sketches made by Nemo architects. According to these plans, Spolia Design started to find and collect building parts from buildings that were in a demolition process. These materials were fitted to the plans and refined for their new surfaces and measurements. According to these materials Spolia Design made tests and a structural plan for the building.



Exhibition building for Avotakka: Structural plan by Spolia Design



Picture: Konsta Ryösä



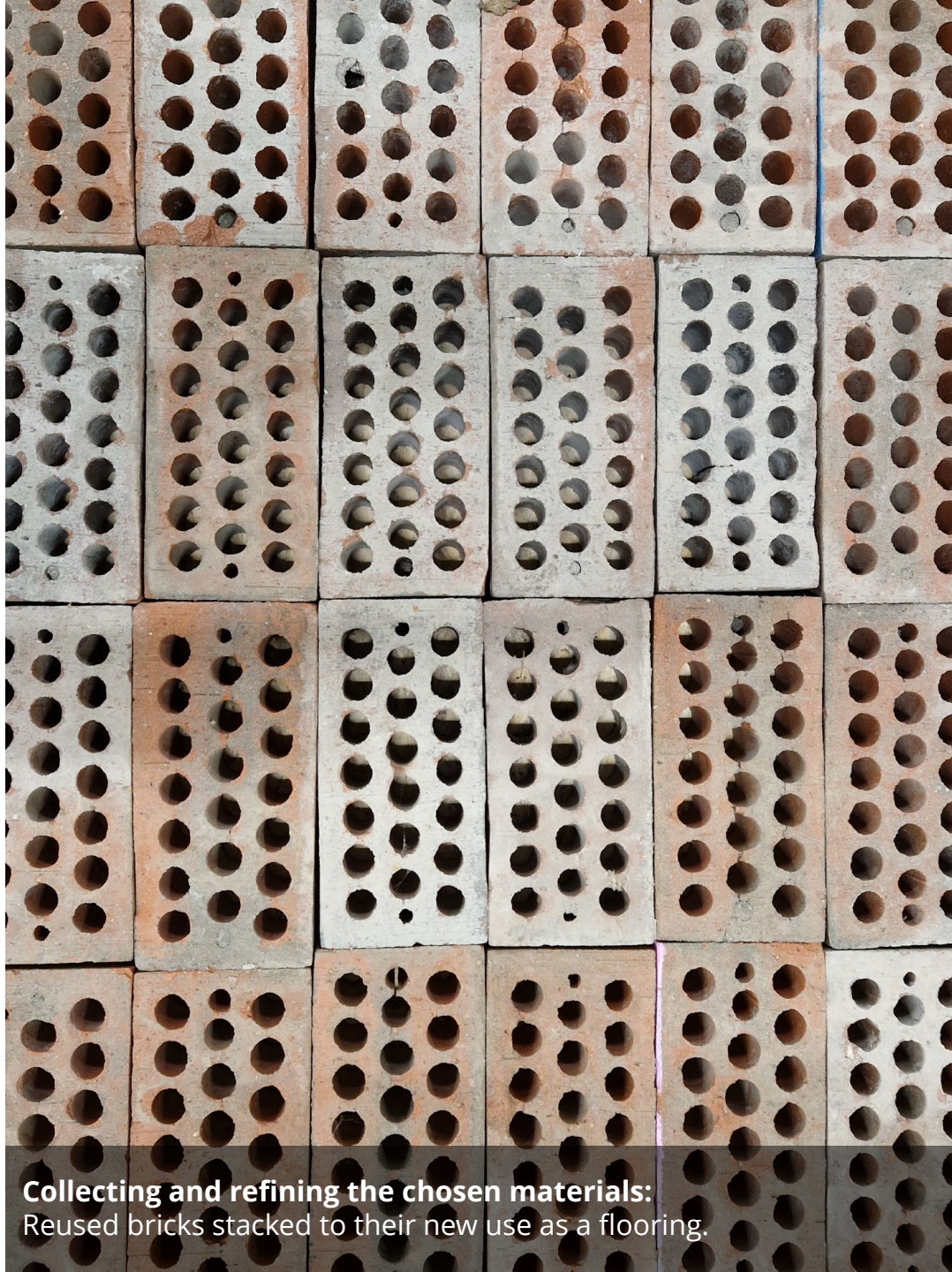
Collecting and refining the chosen materials:
Dismantling process of a brick building in Helsinki.



Collecting and refining the chosen materials:
Cleaning process of hole bricks masoned with cement based mortar.



Collecting and refining the chosen materials:
Cleaned bricks packaged and ready for their next use.



Collecting and refining the chosen materials:
Reused bricks stacked to their new use as a flooring.



Collecting and refining the chosen materials:
Makasiinterminaali in Helsinki with glulam timber beams in a demolition process.



Collecting and refining the chosen materials:
Glulam beams after the demolition. Demolition was done in a normal way so the beams were partially damaged.



Collecting and refining the chosen materials:
Good parts that were not damaged were taken to Janakkala for a refining process with a circular saw.

12.10.2023



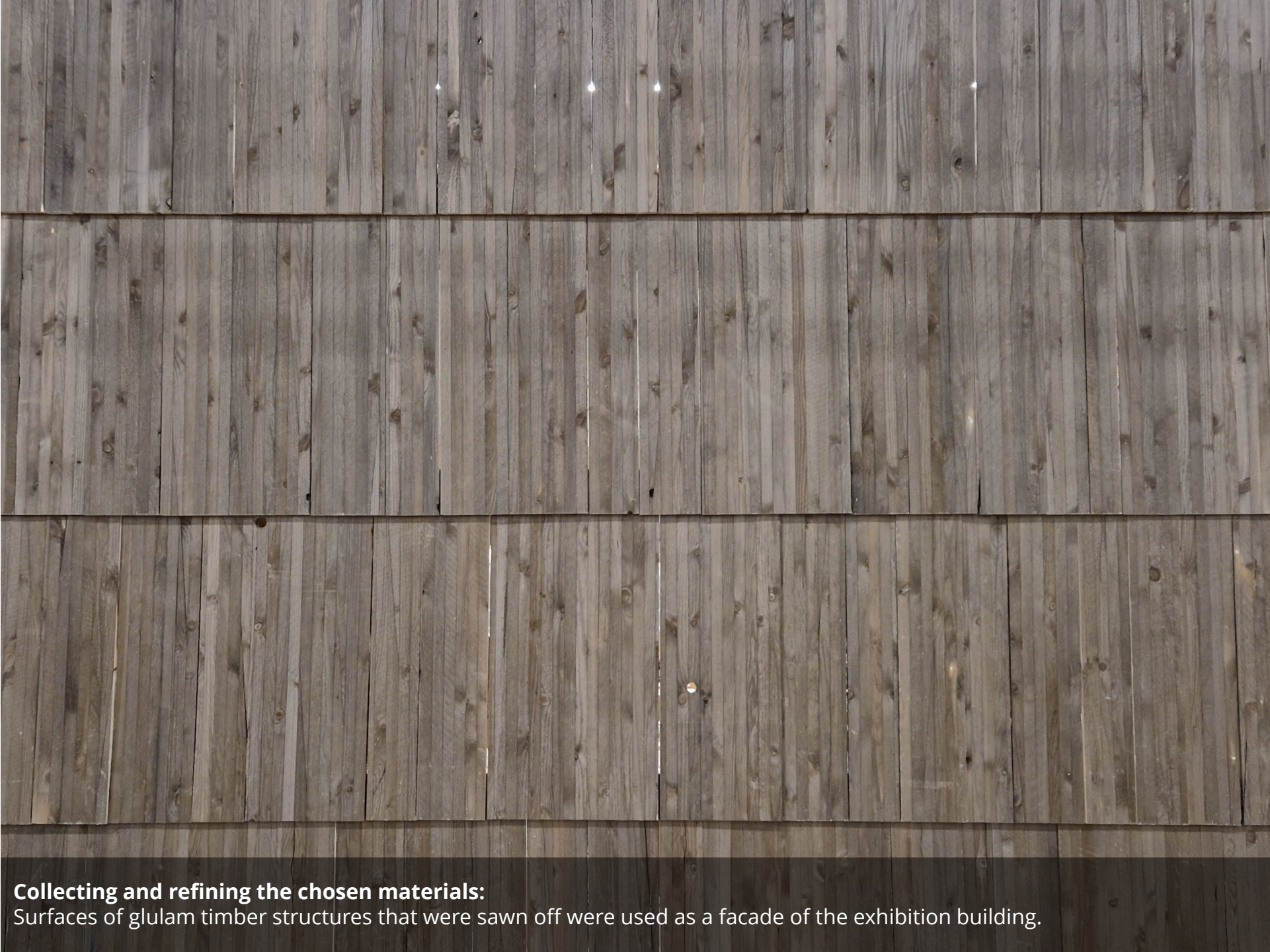
Collecting and refining the chosen materials:
Circular saw that was used refining process of glulam timber structures.



Collecting and refining the chosen materials:
Sawn off glulam timber structures ready for the transportation to Messukeskus.

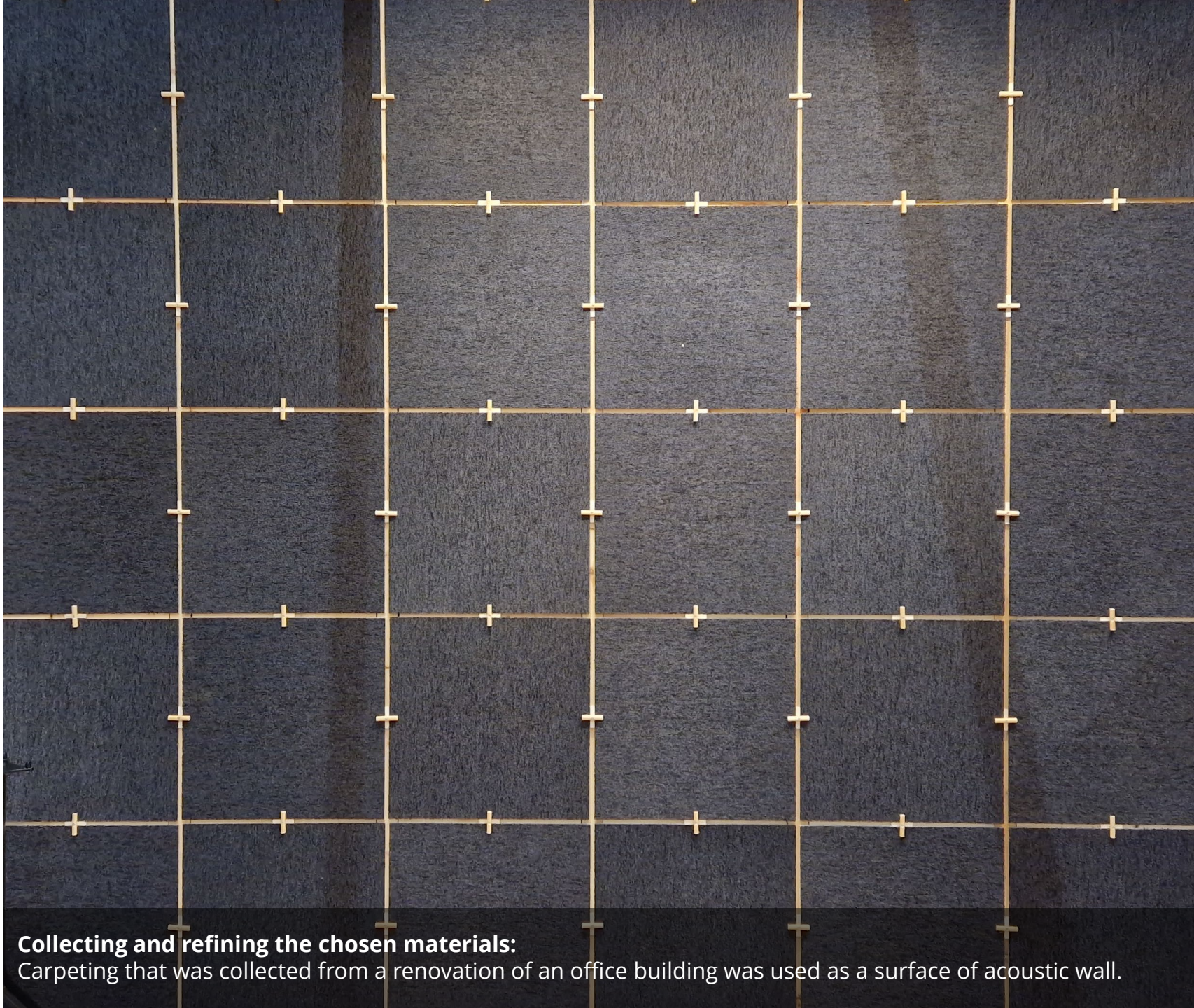


Collecting and refining the chosen materials:
Reused glulam timber structures as beams and columns of a frame of an exhibition building.



Collecting and refining the chosen materials:

Surfaces of glulam timber structures that were sawn off were used as a facade of the exhibition building.



Collecting and refining the chosen materials:

Carpeting that was collected from a renovation of an office building was used as a surface of acoustic wall.



Collecting and refining the chosen materials:
Surplus of the hollow core slab industry before the refining process.



Collecting and refining the chosen materials:

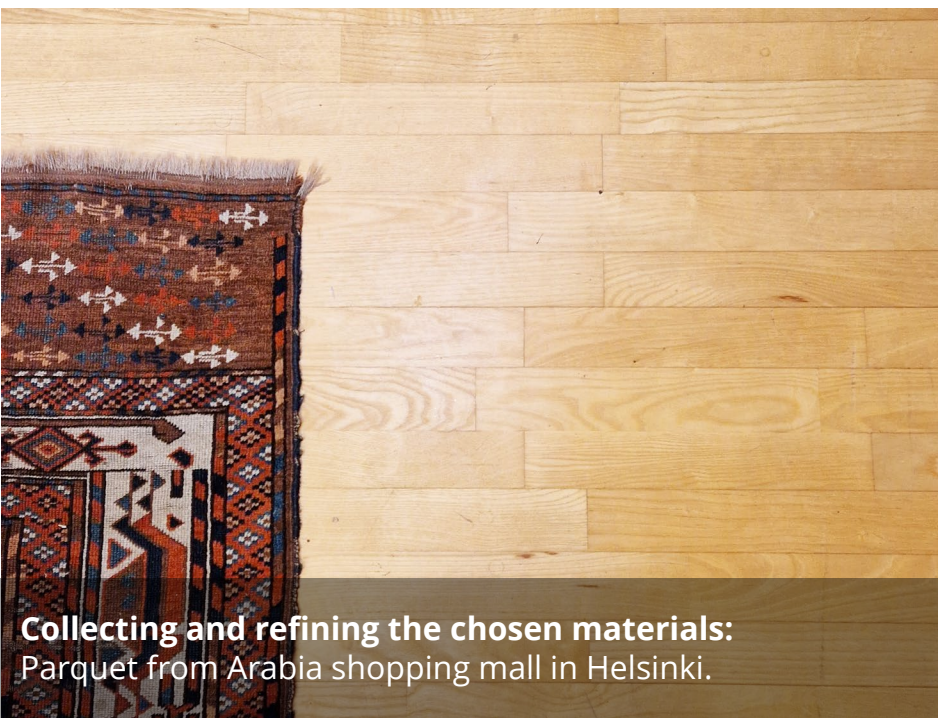
Spolia® turf stone cut from the surplus of the hollow core slab industry and stacked as a flooring and base for plants.



Collecting and refining the chosen materials:
Aluminum facade from a building in Espoo, Tapiola.



Collecting and refining the chosen materials:
Metal coated hardboard from Makasiiniterminaali, Helsinki.



Collecting and refining the chosen materials:
Parquet from Arabia shopping mall in Helsinki.



Collecting and refining the chosen materials:
Plywood from Makasiiniterminaali, Helsinki.

Finished exhibition building for Avotakka magazine:
Reused glulam structures, bricks and glass walls
Picture: Antti Vettenranta /A-lehdet





Finished exhibition building for Avotakka magazine:
Reused carpeting (wall) and metal coated hardboard
Picture: Antti Vettenranta /A-lehdet



**Finished exhibition building for Avotakka magazine:
Reused glass walls**
Picture: Antti Vettenranta /A-lehdet



**Finished exhibition building for Avotakka magazine:
Reused plywood**
Picture: Antti Vettenranta /A-lehdet

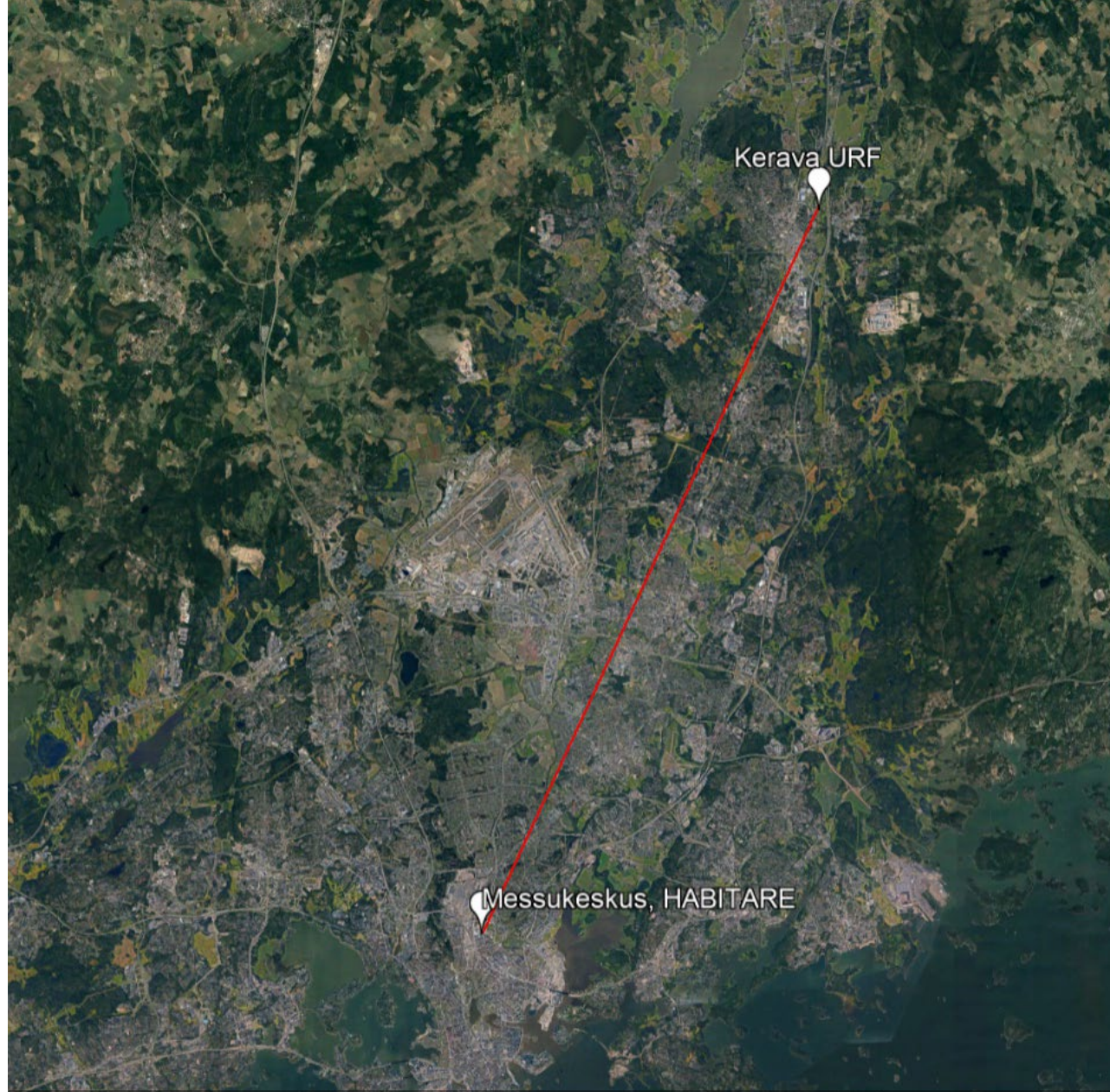
Habitare exhibition 2023

41 563 visitors

More than 400 companies

13 691 professionals

Finished exhibition building for Avotakka magazine:
Spolia® turf stone from hollow core slab industry surplus
Picture: Antti Vettenranta /A-lehdet



The journey of the building parts continues:
Building parts are going from Messukeskus to URF in Kerava for 2024
Picture: Google Earth